

# Suction excavator

WE HAVE THE SOLUTION



# WELCOME to RSP

Your manufacturer of special suction machines



## The base of your success.

As the market leader in vacuum excavation systems we have gained great expertise and a lot of experience in devising and manufacturing mobile and stationary suction plants as well as customized solutions.

Combined with fans of different output capacities, transport vehicles of different sizes offer a mul-

titude of combinations which allow you to configure the perfect machine for your application.

The special suction plants from RSP put a stop to the inefficiency and high cost of manual work. When operating in sensitive areas, RSP suction plants are practically unbeatable in terms of non-destructive excavation.

## POWER meets EFFICIENCY

### The functional principle

The internationally patented RSP suction principle guarantees the highest degree of gravity separation, lowest load on the filters, and consistently high suction performance.

The fan generates an air current of up to 44,000m<sup>3</sup>/h and a maximum vacuum of 55,000 Pa. The suction hose is moved three-dimensionally via a hydraulically operated boom. The air current removes all materials through the suction crown. All materials can be sucked up, solid elements up to 250 mm in diameter.



The air is quietened and deflected in the collection chamber so that the main elements of the intake are eliminated. Separation chambers provide further purifying and drying of the air stream. The collection tank is positioned such that the load is optimally distributed over the vehicle axles. The superfine filter unit separates the finest dusts from the air flow. The purified air is discharged to the top via a sound absorbing unit. The fine-mesh filters are cleaned with compressed air. The collection chamber, the separation chamber and the fine-mesh

filter unit are emptied whenever a tilting operation is performed. All functions of the superstructure are controlled via a radio-operated remote control box or via a cabled remote controller.

Powerful high-performance fans specially developed for RSP operating in conjunction with the most efficient separation system available in the suction excavator market guarantee highest performance constancy. The machines' solid structure ensures a long service life.

# MODULAR SYSTEM meets CUSTOMER NEEDS

## Our product range

We produce suction superstructures for transport vehicles carrying from 7.5 to 40 tons.

These customer-oriented suction superstructures meet all industry-specific requirements regarding maximized payload, flexible deployment, functionality, robustness and highest economic efficiency. We offer tailor-made solutions which fulfil even the most specific customer wishes.

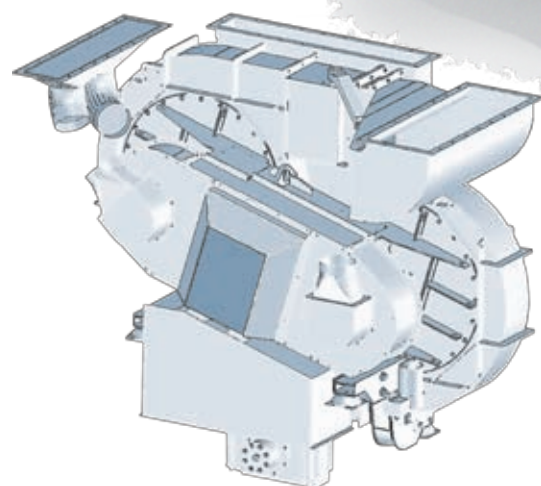


The vast selection includes fans with different output ratings as well as several types of hose manipulators and extensions. This makes it easy for our customers to configure a machine exactly for their specific application.



## DESIGN meets FUNCTIONALITY

Construction machines must be functional,  
it is not necessary for them to look nice.  
But a combination of these two features is a really good thing.





High-end parts from internationally renowned vendors as well as the high manufacturing quality make for a long service life.

# PROBLEM meets CUSTOMIZED SOLUTION

## Our custom-made units



In addition to the standard range, RSP also offers special machines and customized solutions.

Our experienced design department with its modern CAD infrastructure enables us to quickly respond to specific customer requirements.

In close cooperation with our partners, we developed system solutions for complex applications, e.g.

- a vehicle having a milling unit on its rear side for fast cable laying
- a road-rail vehicle for working in railway track areas
- a surface-washing machine equipped with a high-pressure water cleaning unit



# PERFORMANCE meets SAFETY

## Areas of application

RSP suction excavators are the economical solution in applications where a high risk of damage forbids the use of hydraulic excavation machines, and/or the jobsite conditions make conventional excavation impossible.

All types of material (solid elements up to 250 mm in diameter) can be sucked up. Depending on the material to be removed and depending on the suction power installed, suction distances of up to 150 m in horizontal and up to 30 m in vertical direction are possible.



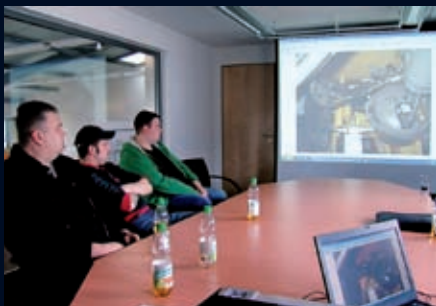
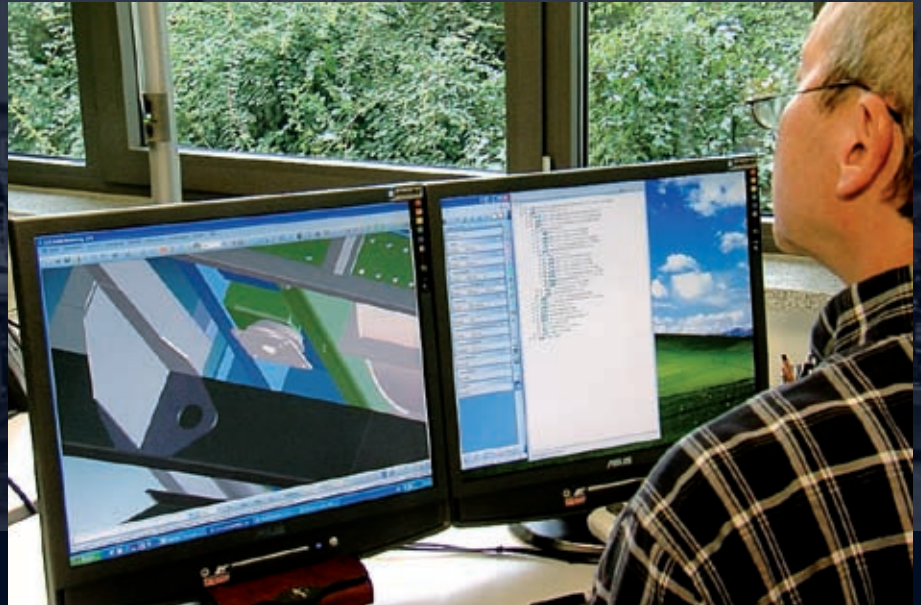
RSP Suction Excavators assure instant operability as well as quick and non-destructive excavation while reducing interference with traffic and minimizing the impact on the environment.

## SERVICE meets CUSTOMERS

All-inclusive service for a strong market position

RSP provides a comprehensive range of services to its customers, e.g.

- Assistance in configuring the optimal machine
- Support in financing matters
- Coordination of details once the rough-assembled unit was accepted by the customer
- Comprehensive advice on how to operate and maintain the machines
- Service and maintenance agreements
- User-specific training courses at RSP or at the customer's premises



We are seeking to build long-standing partnerships with our customers since this enables us to further develop our machines by exposure to the practical world.

Our experienced service team as well as our service partners abroad, our hotline service and our on-line shop enable short response times for customer requests.

We grow along with our customers' satisfaction and confidence. New ideas created in joint collaboration allow us to translate visions into new products and technologies.

# THE BASE of your **SUCCESS**

RSP GmbH

RSP GmbH was established in 1993 and has become the leading manufacturer of such special machines.

We manufacture suction superstructures for 2-to 5-axle chassis, as well as stationary suction devices and customized machines.

Our production area covers more than 5,000 m<sup>2</sup>.

In the pre-assembly area, all major components are mounted onto the chassis and undergo subsequent alignment, and all bearing bores

are drilled out. After completion of the disassembly and adaptation work the parts are sandblasted. In our modern phosphating unit, all metal surfaces are subjected to a degreasing treatment.

Two-component paint in the colour desired by the customer is then applied to the machine.

In the final assembly area the suction units are finally assembled and started up.



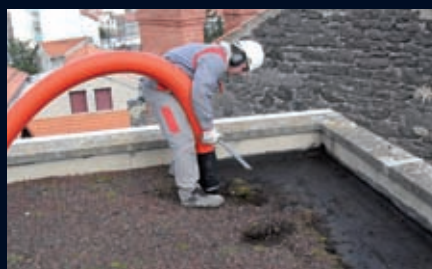
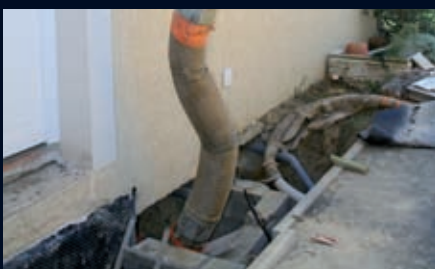
Delivery to the customer as well as theoretical and practical training takes place in the quiet atmosphere of our in-house delivery center.

Close proximity to our customers is of primary importance to us and has always been a fundamental principle of our company philosophy. We are constantly striving to work in close cooperation with our business partners.

**RSP – you partner for customized solutions**  
We look forward to receiving your inquiry.

## Possible applications include:

- Underground construction work around buried lines for all pipeline and cable network operators
- Emergency repair service for all pipeline and cable network operators
- Railway trackside maintenance and repair
- Clearing away environmental damage
- Replacement of contaminated soil around the roots of trees
- Creation of starting and termination pits in applications involving the use of ground displacement rockets
- Removal of bentonite in applications involving the use of horizontal boring units
- Removal of material in demolition and rehabilitation projects
- Exposition of structures to be waterproofed
- Removal of gravel from flat roofs
- Cleaning blocked street gutters and gullies
- Clean-up at accident sites, after damage and natural disasters
- Industrial applications, e.g. in refineries and in chemical plants
- Application for special operations





See [www.rsp-germany.com](http://www.rsp-germany.com)  
for our representatives abroad.

**Reschwitzer Saugbagger Produktions GmbH**

Zum Silberstollen 10  
07318 Saalfeld

Phone + 49 (0) 36 71 57 21-0  
Telefax + 49 (0) 36 71 57 21-21  
[info@rsp-germany.com](mailto:info@rsp-germany.com)

